

# Винтовые воздушные компрессоры с ременным приводом Серия АНВ



Архангельск (8182)63-90-72  
Астана (7172)727-132  
Астрахань (8512)99-46-04  
Барнаул (3852)73-04-60  
Белгород (4722)40-23-64  
Брянск (4832)59-03-52  
Владивосток (423)249-28-31  
Волгоград (844)278-03-48  
Вологда (8172)26-41-59  
Воронеж (473)204-51-73  
Екатеринбург (343)384-55-89  
Иваново (4932)77-34-06

Ижевск (3412)26-03-58  
Иркутск (395)279-98-46  
Казань (843)206-01-48  
Калининград (4012)72-03-81  
Калуга (4842)92-23-67  
Кемерово (3842)65-04-62  
Киров (8332)68-02-04  
Краснодар (861)203-40-90  
Красноярск (391)204-63-61  
Курск (4712)77-13-04  
Липецк (4742)52-20-81  
Киргизия (996)312-96-26-47

Магнитогорск (3519)55-03-13  
Москва (495)268-04-70  
Мурманск (8152)59-64-93  
Набережные Челны (8552)20-53-41  
Нижний Новгород (831)429-08-12  
Новокузнецк (3843)20-46-81  
Новосибирск (383)227-86-73  
Омск (3812)21-46-40  
Орел (4862)44-53-42  
Оренбург (3532)37-68-04  
Пенза (8412)22-31-16  
Россия (495)268-04-70

Пермь (342)205-81-47  
Ростов-на-Дону (863)308-18-15  
Рязань (4912)46-61-64  
Самара (846)206-03-16  
Санкт-Петербург (812)309-46-40  
Саратов (845)249-38-78  
Севастополь (8692)22-31-93  
Симферополь (3652)67-13-56  
Смоленск (4812)29-41-54  
Сочи (862)225-72-31  
Ставрополь (8652)20-65-13  
Казахстан (772)734-952-31

Сургут (3462)77-98-35  
Тверь (4822)63-31-35  
Томск (3822)98-41-53  
Тула (4872)74-02-29  
Тюмень (3452)66-21-18  
Ульяновск (8422)24-23-59  
Уфа (347)229-48-12  
Хабаровск (4212)92-98-04  
Челябинск (351)202-03-61  
Череповец (8202)49-02-64  
Ярославль (4852)69-52-93

# BELT DRIVEN SCREW AIR COMPRESSOR



AirKing screw air compressors with V-belt drive use Germany technique which provide high quality air, low noise and high efficiency. It's more elegant, easy to install, simple operation and maintenance.

Through the powerful intelligent controller test the pressure of the air system changes continuously, accurate to change the speed, air flow of the air compressor always consistent to the demand of the user's system. Intelligent controller of reaction rate is calculated by milliseconds, and at the same time for speed correction can be made within the 3 ms, make its outlet air pressure control within the minimum range.

## INTEL DRIVE FEATURES

High-efficiency induction motor, Integrated Variable Speed Driven (VSD) with speed control, Leading control and protection, Soft starting eliminates drive stress

## ECONOMY OF USE

Saves your money by lowering your operation cost. These saving will continue to be delivered to your bottom line year after year.

## BEST EFFICIENCY AT PART-LOAD

When operating at part-load, the performance is top in class. The variable speed IntelliDrive avoids load cycling and maintains a steady state of operation, reducing operating and maintenance costs.



## SOFT START LOWERS YOUR OPERATING COST

The gentle start cycle of the IntelliDrive increases the service life, meaning that frequent stop and restart cycles are permitted, without the risk of over-heating.

## Multiple Machine Operation

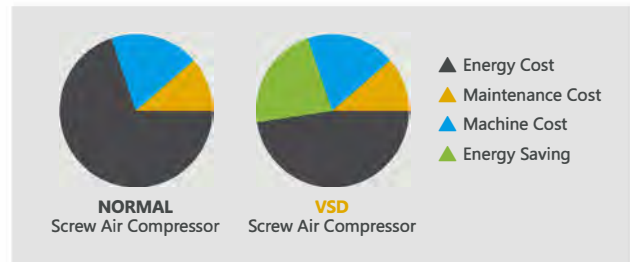
When operating as a pressure trim machine, the power savings achieved by a single compressor is multiplied by additional savings achieved over the full installation.

## High Full-load Operating Efficiency

Class-leading performance achieved by state-of-the-art airend design and manufacturing processes, coupled with the reduction of internal losses, means that airend full-load performance.

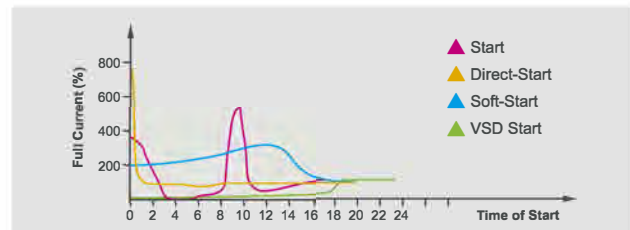
## COST

The Guangzhou AirKing VSD screw air compressor can change the motor RPM precisely according to the air consumption under stable discharge pressure. The compressor only delivers the required air, and only consumes the energy of necessary compressed air. That's why the VSD type screw air compressor can save energy during the whole set machine operation. The cost of saving energy is much higher than the cost of machine itself.



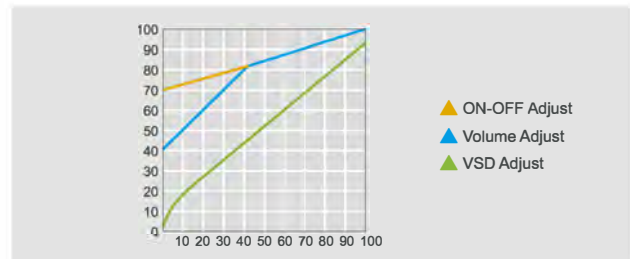
## START AND OPERATION

The figure shows a comparison of several types of start up. We can see that the VSD air compressor is slowly accelerating started, more stable than the soft-start compressor, completely avoiding the current peak. Variable speed screw air compressor is ideal for use in areas lacking of electricity.



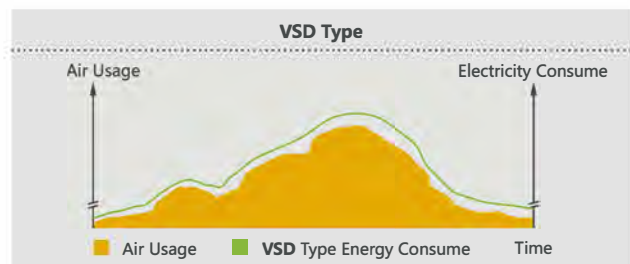
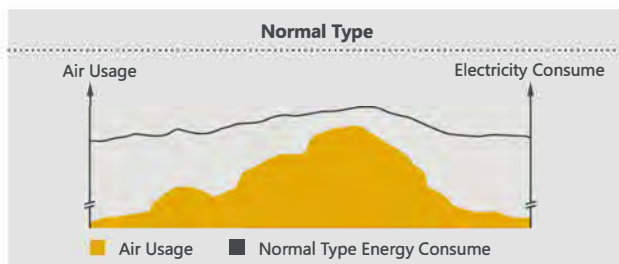
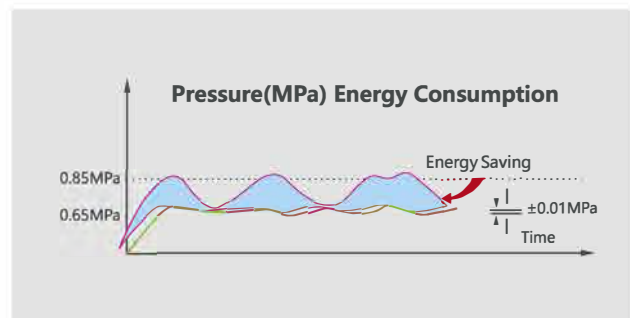
## ELECTRICITY SAVING RESULT

According to the research between the VSD screw air compressor and a normal screw air compressor, there are two fields which can display the result of energy saving, the loss of no-loading and loss of fluctuating pressure. For example, for a 55KW screw air compressor, 70% air delivery in a year, the VSD type can save about 80000KWH energy. The cost of VSD can be taken back within two years.



## CONSTANT PRESSURE AIR SUPPLY, WITH THE BALANCE OF PRODUCTION

The figure shows the energy consumption comparison between the general air compressor and VSD air compressor. The VSD screw air compressor changes the rotating speed according to air consumption and balance the air supply and air usage. Thus avoiding the machine frequent loading and unloading, making the VSD machine save more than 35% energy compared to normal compressor. Stable pressure delivery controlled the pressure zone with 0.01 Mpa-0.02 Mpa, avoid energy loss under high pressure in the normal type air compressor.





### AIR END (GERMAN TECHNOLOGY)

Famous brand air end with SKF bearing, the powerful heart decides the high performance of the whole machine, to make sure bigger air capacity, higher efficiency, high precision process rotor, extend the life of the moving parts efficiently.



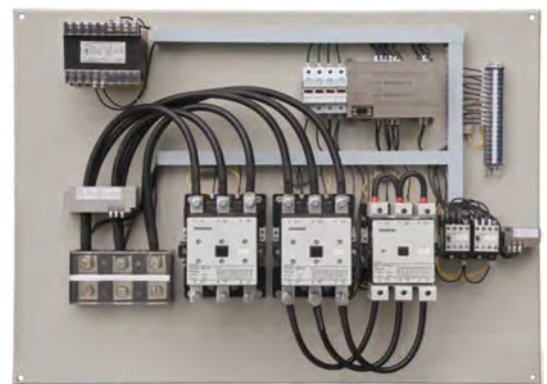
### COOLING SYSTEM

Design of large heat exchange area, can effectively avoid high temperature and adapt to bad working condition to ensure longer life.



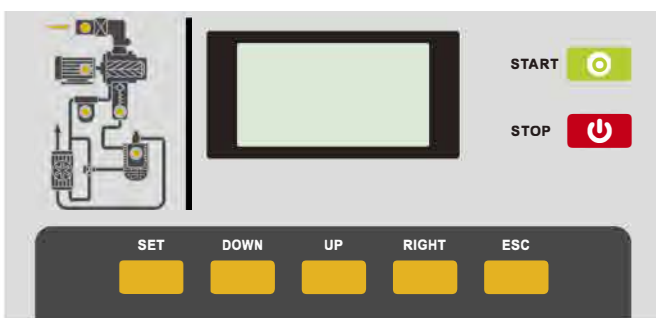
### MOTOR

Using well-know brand high performance motor, protection class Ip54, F Class insulation, SKF load bearing, higher efficiency than similar products by 3%-5%.



### ELECTRICAL BOARD (SIEMENS/SCHNEIDER)

Main electrical components use the world famous brand Schneider, Siemens etc., professional wire input design, strong function to diagnose fault and protect automatically.



### CONTROL PANEL (CHINESE, ENGLISH, RUSSIAN, SPANISH AVAILABLE)

AirKing control panel provide the most cost effective maintenance program, to ensure trouble-free operation, almost like a built-in service technician.



### INTAKE VALVE

Automatically adjust based on gas consumption, low maintenance, good stability, large inlet air.

## TECHNICAL SPECIFICATIONS (BELT DRIVEN TYPE)

MODEL	AHB-5A	AHB-7A	AHB-10A	AHB-15A	AHB-20A	AHB-25A	AHB-30A	AHB-40A	AHB-50A	AHB-60A	AHB-75A	AHB-100A
Free air deliver / Discharge pressure (m <sup>3</sup> /min/Mpa)	0.55/0.8	0.85/0.7 0.75/0.8	1.2/0.7 1.1/0.8 0.9/1.0 0.7/1.2	1.6/0.7 1.5/0.8 1.3/1.0 1.1/1.2	2.5/0.7 2.3/0.8 2.1/1.0 1.9/1.2	3.2/0.7 2.9/0.8 2.6/1.0 2.2/1.2	3.8/0.7 3.6/0.8 3.2/1.0 2.8/1.2	5.2/0.7 5.0/0.8 4.5/1.0 3.8/1.2	6.8/0.7 6.2/0.8 5.6/1.0 4.9/1.2	7.3/0.7 7.0/0.8 6.0/1.0 5.6/1.2	10.0/0.7 9.1/0.8 8.5/1.0 7.6/1.2	13.5/0.7 12.6/0.8 11.2/1.0 10.0/1.2
Free air deliver / Discharge pressure (CFM/PSI)	20/116	30/102 27/116	42/102 39/116 32/145 25/174	57/102 53/116 46/145 39/174	88/102 81/116 74/145 67/174	113/102 102/116 92/145 78/174	134/102 127/116 113/145 99/174	184/102 177/116 159/145 134/174	240/102 219/116 198/145 173/174	258/102 247/116 212/145 198/174	353/102 322/116 300/145 269/174	477/102 445/116 396/145 353/174
Compression Stage	Single Stage											
Ambient temperature	-5~+45°C											
Cooling mode	Air Cooling											
Discharge temperature (°C)	Ambient temperature+15°C											
Lubricant (L)	3	3.7	3.7	10	10	14.5	14.5	15	20	20	45	45
Noise level (Db)	62±2			64±2		65±2			66±2		68±2	
Drive method	Belt Driven											
Electricity (V/ph/Hz)	380/3/50											
Motor power (KW/HP)	4/5.5	5.5/7.5	7.5/10	11/15	15/20	18.5/25	22/30	30/40	37/50	45/60	55/75	75/100
Starting method	Direct Starting			Y-Δ Starter (Star Delta Starting)								
Dimension L*W*H (mm)	920*600*695	860*730*960	860*730*960	940*800*1075		1200*950*1150		1400*930*1280	1500*990*1420		1730*1050*1550	1730*1070*1650
Net weight (kg)	135	210	223	315	325	455	491	566	695	745	1090	1240
Air outlet diameter (inch/mm)	3/4"			1"				1 1/2"		2"		

Архангельск (8182)63-90-72  
 Астана (7172)727-132  
 Астрахань (8512)99-46-04  
 Барнаул (3852)73-04-60  
 Белгород (4722)40-23-64  
 Брянск (4832)59-03-52  
 Владивосток (423)249-28-31  
 Волгоград (844)278-03-48  
 Вологда (8172)26-41-59  
 Воронеж (473)204-51-73  
 Екатеринбург (343)384-55-89  
 Иваново (4932)77-34-06

Ижевск (3412)26-03-58  
 Иркутск (395)279-98-46  
 Казань (843)206-01-48  
 Калининград (4012)72-03-81  
 Калуга (4842)92-23-67  
 Кемерово (3842)65-04-62  
 Киров (8332)68-02-04  
 Краснодар (861)203-40-90  
 Красноярск (391)204-63-61  
 Курск (4712)77-13-04  
 Липецк (4742)52-20-81

Киргизия (996)312-96-26-47

Магнитогорск (3519)55-03-13  
 Москва (495)268-04-70  
 Мурманск (8152)59-64-93  
 Набережные Челны (8552)20-53-41  
 Нижний Новгород (831)429-08-12  
 Новокузнецк (3843)20-46-81  
 Новосибирск (383)227-86-73  
 Омск (3812)21-46-40  
 Орел (4862)44-53-42  
 Оренбург (3532)37-68-04  
 Пенза (8412)22-31-16

Россия (495)268-04-70

Пермь (342)205-81-47  
 Ростов-на-Дону (863)308-18-15  
 Рязань (4912)46-61-64  
 Самара (846)206-03-16  
 Санкт-Петербург (812)309-46-40  
 Саратов (845)249-38-78  
 Севастополь (8692)22-31-93  
 Симферополь (3652)67-13-56  
 Смоленск (4812)29-41-54  
 Сочи (862)225-72-31  
 Ставрополь (8652)20-65-13

Казахстан (772)734-952-31

Сургут (3462)77-98-35  
 Тверь (4822)63-31-35  
 Томск (3822)98-41-53  
 Тула (4872)74-02-29  
 Тюмень (3452)66-21-18  
 Ульяновск (8422)24-23-59  
 Уфа (347)229-48-12  
 Хабаровск (4212)92-98-04  
 Челябинск (351)202-03-61  
 Череповец (8202)49-02-64  
 Ярославль (4852)69-52-93