

Винтовые воздушные компрессоры с регулируемой скоростью Серия АНД



Архангельск (8182)63-90-72
Астана (7172)727-132
Астрахань (8512)99-46-04
Барнаул (3852)73-04-60
Белгород (4722)40-23-64
Брянск (4832)59-03-52
Владивосток (423)249-28-31
Волгоград (844)278-03-48
Вологда (8172)26-41-59
Воронеж (473)204-51-73
Екатеринбург (343)384-55-89
Иваново (4932)77-34-06

Ижевск (3412)26-03-58
Иркутск (395)279-98-46
Казань (843)206-01-48
Калининград (4012)72-03-81
Калуга (4842)92-23-67
Кемерово (3842)65-04-62
Киров (8332)68-02-04
Краснодар (861)203-40-90
Красноярск (391)204-63-61
Курск (4712)77-13-04
Липецк (4742)52-20-81

Киргизия (996)312-96-26-47

Магнитогорск (3519)55-03-13
Москва (495)268-04-70
Мурманск (8152)59-64-93
Набережные Челны (8552)20-53-41
Нижний Новгород (831)429-08-12
Новокузнецк (3843)20-46-81
Новосибирск (383)227-86-73
Омск (3812)21-46-40
Орел (4862)44-53-42
Оренбург (3532)37-68-04
Пенза (8412)22-31-16

Россия (495)268-04-70

Пермь (342)205-81-47
Ростов-на-Дону (863)308-18-15
Рязань (4912)46-61-64
Самара (846)206-03-16
Санкт-Петербург (812)309-46-40
Саратов (845)249-38-78
Севастополь (8692)22-31-93
Симферополь (3652)67-13-56
Смоленск (4812)29-41-54
Сочи (862)225-72-31
Ставрополь (8652)20-65-13

Казахстан (772)734-952-31

Сургут (3462)77-98-35
Тверь (4822)63-31-35
Томск (3822)98-41-53
Тула (4872)74-02-29
Тюмень (3452)66-21-18
Ульяновск (8422)24-23-59
Уфа (347)229-48-12
Хабаровск (4212)92-98-04
Челябинск (351)202-03-61
Череповец (8202)49-02-64
Ярославль (4852)69-52-93

<https://airking.nt-rt.ru> || ake@nt-rt.ru

VARIABLE SPEED DRIVE SCREW AIR COMPRESSOR



Use AirKing Variable Speed Drive screw air compressor, you don't need to worry about the complex of electrical installation and programming for the machine. All parts of compressor are assembled before shipment, as long as the main power supply is connected, it can work immediately. Through the powerful intelligent controller test the pressure of the air system changes continuously, accurate to change the speed, air flow of the air compressor always consistent to the demand of the user's system. Intelligent controller of reaction rate is calculated by milliseconds, and at the same time for speed correction can be made within the 3 ms, make its outlet air pressure control within the minimum range.

INTEL DRIVE FEATURES

High-efficiency induction motor, Integrated Variable Speed Driven (VSD) with speed control, Leading control and protection, Soft starting eliminates drive stress

ECONOMY OF USE

Saves your money by lowering your operation cost. These saving will continue to be delivered to your bottom line year after year.

BEST EFFICIENCY AT PART-LOAD

When operating at part-load, the performance is top in class. The variable speed IntelliDrive avoids load cycling and maintains a steady state of operation, reducing operating and maintenance costs.



SOFT START LOWERS YOUR OPERATING COST

The gentle start cycle of the IntelliDrive increases the service life, meaning that frequent stop and restart cycles are permitted, without the risk of over-heating.

Multiple Machine Operation

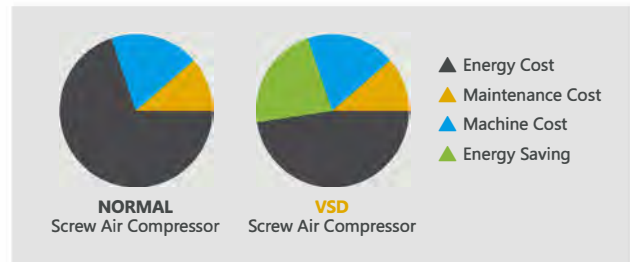
When operating as a pressure trim machine, the power savings achieved by a single compressor is multiplied by additional savings achieved over the full installation.

High Full-load Operating Efficiency

Class-leading performance achieved by state-of-the-art airend design and manufacturing processes, coupled with the reduction of internal losses, means that airend full-load performance.

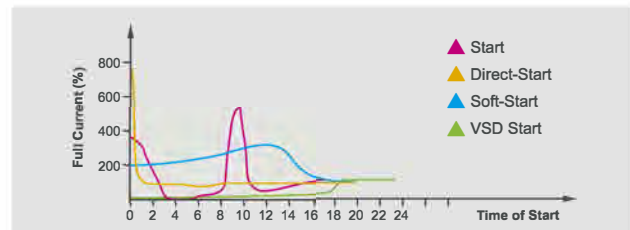
COST

The Guangzhou AirKing VSD screw air compressor can change the motor RPM precisely according to the air consumption under stable discharge pressure. The compressor only delivers the required air, and only consumes the energy of necessary compressed air. That's why the VSD type screw air compressor can save energy during the whole set machine operation. The cost of saving energy is much higher than the cost of machine itself.



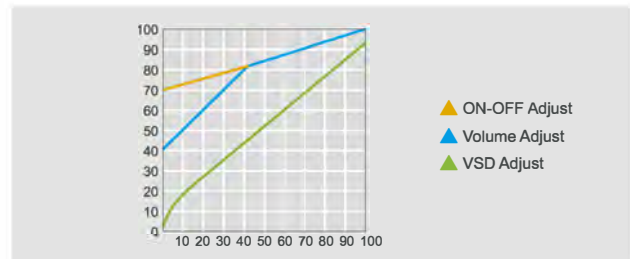
START AND OPERATION

The figure shows a comparison of several types of start up. We can see that the VSD air compressor is slowly accelerating started, more stable than the soft-start compressor, completely avoiding the current peak. Variable speed screw air compressor is ideal for use in areas lacking of electricity.



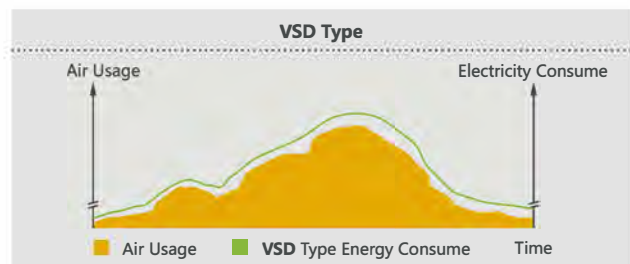
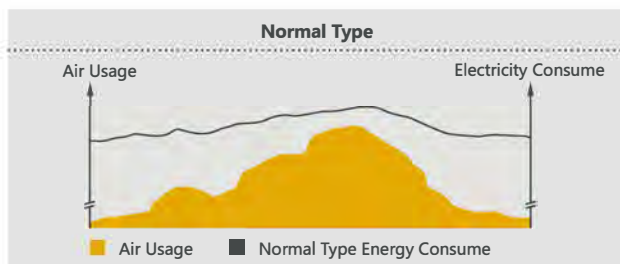
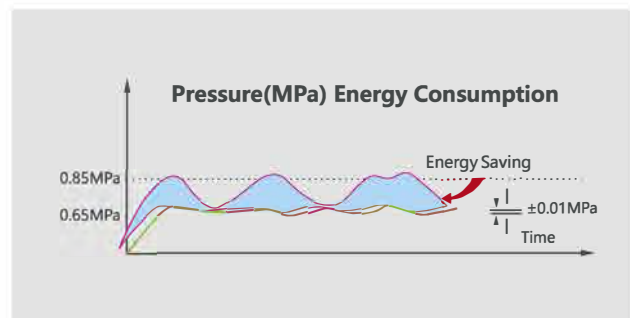
ELECTRICITY SAVING RESULT

According to the research between the VSD screw air compressor and a normal screw air compressor, there are two fields which can display the result of energy saving, the loss of no-loading and loss of fluctuating pressure. For example, for a 55KW screw air compressor, 70% air delivery in a year, the VSD type can save about 80000KWH energy. The cost of VSD can be taken back within two years.



CONSTANT PRESSURE AIR SUPPLY, WITH THE BALANCE OF PRODUCTION

The figure shows the energy consumption comparison between the general air compressor and VSD air compressor. The VSD screw air compressor changes the rotating speed according to air consumption and balance the air supply and air usage. Thus avoiding the machine frequent loading and unloading, making the VSD machine save more than 35% energy compared to normal compressor. Stable pressure delivery controlled the pressure zone with 0.01 Mpa-0.02 Mpa, avoid energy loss under high pressure in the normal type air compressor.





AIR END (GERMAN TECHNOLOGY)

Famous brand air end with SKF bearing, the powerful heart decides the high performance of the whole machine, to make sure bigger air capacity, higher efficiency, high precision process rotor, extend the life of the moving parts efficiently.



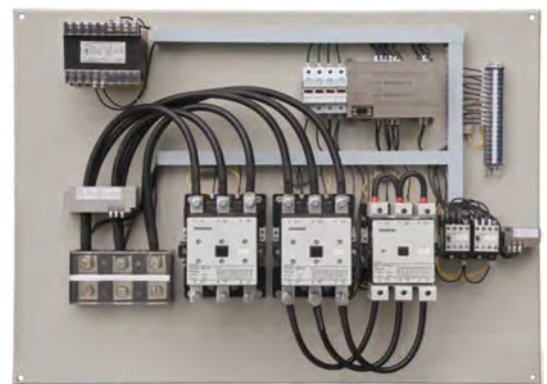
COOLING SYSTEM

Design of large heat exchange area, can effectively avoid high temperature and adapt to bad working condition to ensure longer life.



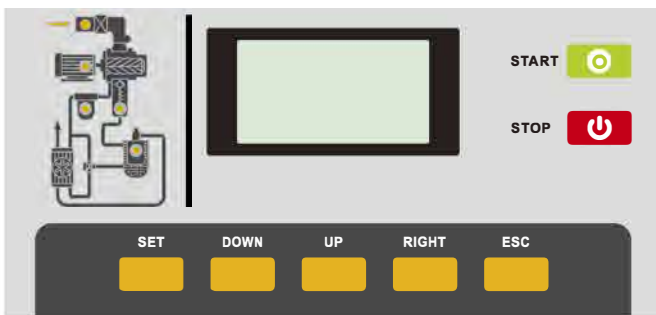
MOTOR

Using well-know brand high performance motor, protection class Ip54, F Class insulation, SKF load bearing, higher efficiency than similar products by 3%-5%.



ELECTRICAL BOARD (SIEMENS/SCHNEIDER)

Main electrical components use the world famous brand Schneider, Siemens etc., professional wire input design, strong function to diagnose fault and protect automatically.



CONTROL PANEL (CHINESE, ENGLISH, RUSSIAN, SPANISH AVAILABLE)

AirKing control panel provide the most cost effective maintenance program, to ensure trouble-free operation, almost like a built-in service technician.



INTAKE VALVE

Automatically adjust based on gas consumption, low maintenance, good stability, large inlet air.

TECHNICAL SPECIFICATIONS (DIRECT DRIVEN TYPE)

MODEL	AHD-30A	AHD-50A	AHD-75A	AHD-100A	AHD-120A	AHD-150A	AHD-175A	AHD-220A	AHD-250A	AHD-300A	AHD-350A
Free air deliver / Discharge pressure (m ³ /min/Mpa)	3.8/0.7	6.8/0.7	10.0/0.7	13.5/0.7	16.1/0.7	21.0/0.7	25.2/0.7	28.7/0.7	32.0/0.7	36.7/0.7	42.0/0.7
	3.6/0.8	6.2/0.8	9.1/0.8	12.6/0.8	15.0/0.8	19.8/0.8	24.0/0.8	27.6/0.8	30.5/0.8	34.5/0.8	40.5/0.8
	3.2/1.0	5.6/1.0	8.5/1.0	11.2/1.0	13.8/1.0	17.0/1.0	21.0/1.0	24.6/1.0	27.5/1.0	30.2/1.0	38.1/1.0
	2.8/1.2	4.9/1.2	7.6/1.2	10.0/1.2	12.3/1.2	15.3/1.2	18.3/1.2	21.5/1.2	24.8/1.2	27.8/1.2	34.6/1.2
Free air deliver / Discharge pressure (CFM/PSI)	134/102	240/102	353/102	477/102	569/102	742/102	890/102	1014/102	1131/102	1297/102	1484/102
	127/116	219/116	322/116	445/116	530/116	700/116	848/116	975/116	1078/116	1219/116	1431/116
	113/145	198/145	300/145	396/145	488/145	601/145	742/145	869/145	972/145	1067/145	1346/145
	99/174	173/174	269/174	353/174	435/174	541/174	647/174	760/174	876/174	982/174	1223/174
Compression Stage	Single Stage										
Ambient temperature	-5~+45°C										
Cooling mode	Air Cooling										
Discharge temperature (°C)	Ambient Temperature+15°C										
Lubricant (L)	14.5	20	45	45	75	75	85	85	120	210	220
Noise level (Db)	68±2		72±2			75±2			76±2		
Drive method	Direct Driven										
Electricity (V/ph/Hz)	380/3/50										
Motor power (KW/HP)	22/30	37/50	55/75	75/100	90/120	110/150	132/175	160/220	185/250	220/300	250/350
Starting method	Y-ΔStarter (Star Delta Starting)										
Dimension L*W*H (mm)	1200*900*1150	1560*1000*1365	1800*1070*1490	1800*1070*1490	2100*1400*1780	2500*1450*1800	2700*1550*1800	2700*1550*1800	2800*1800*1950	2800*1800*1950	3250*2100*2300
Net weight (kg)	510	740	1100	1270	1450	2150	2750	3150	3450	3850	4250
Air outlet diameter (inch/mm)	1"	1 ½"	2"			2 ½"			DN80		

Архангельск (8182)63-90-72
 Астана (7172)727-132
 Астрахань (8512)99-46-04
 Барнаул (3852)73-04-60
 Белгород (4722)40-23-64
 Брянск (4832)59-03-52
 Владивосток (423)249-28-31
 Волгоград (844)278-03-48
 Вологда (8172)26-41-59
 Воронеж (473)204-51-73
 Екатеринбург (343)384-55-89
 Иваново (4932)77-34-06

Ижевск (3412)26-03-58
 Иркутск (395)279-98-46
 Казань (843)206-01-48
 Калининград (4012)72-03-81
 Калуга (4842)92-23-67
 Кемерово (3842)65-04-62
 Киров (8332)68-02-04
 Краснодар (861)203-40-90
 Красноярск (391)204-63-61
 Курск (4712)77-13-04
 Липецк (4742)52-20-81

Магнитогорск (3519)55-03-13
 Москва (495)268-04-70
 Мурманск (8152)59-64-93
 Набережные Челны (8552)20-53-41
 Нижний Новгород (831)429-08-12
 Новокузнецк (3843)20-46-81
 Новосибирск (383)227-86-73
 Омск (3812)21-46-40
 Орел (4862)44-53-42
 Оренбург (3532)37-68-04
 Пенза (8412)22-31-16

Пермь (342)205-81-47
 Ростов-на-Дону (863)308-18-15
 Рязань (4912)46-61-64
 Самара (846)206-03-16
 Санкт-Петербург (812)309-46-40
 Саратов (845)249-38-78
 Севастополь (8692)22-31-93
 Симферополь (3652)67-13-56
 Смоленск (4812)29-41-54
 Сочи (862)225-72-31
 Ставрополь (8652)20-65-13

Сургут (3462)77-98-35
 Тверь (4822)63-31-35
 Томск (3822)98-41-53
 Тула (4872)74-02-29
 Тюмень (3452)66-21-18
 Ульяновск (8422)24-23-59
 Уфа (347)229-48-12
 Хабаровск (4212)92-98-04
 Челябинск (351)202-03-61
 Череповец (8202)49-02-64
 Ярославль (4852)69-52-93

Киргизия (996)312-96-26-47

Россия (495)268-04-70

Казахстан (772)734-952-31