

Безмасляные винтовые воздушные компрессоры Серия АНВ



Архангельск (8182)63-90-72
Астана (7172)727-132
Астрахань (8512)99-46-04
Барнаул (3852)73-04-60
Белгород (4722)40-23-64
Брянск (4832)59-03-52
Владивосток (423)249-28-31
Волгоград (844)278-03-48
Вологда (8172)26-41-59
Воронеж (473)204-51-73
Екатеринбург (343)384-55-89
Иваново (4932)77-34-06

Ижевск (3412)26-03-58
Иркутск (395)279-98-46
Казань (843)206-01-48
Калининград (4012)72-03-81
Калуга (4842)92-23-67
Кемерово (3842)65-04-62
Киров (8332)68-02-04
Краснодар (861)203-40-90
Красноярск (391)204-63-61
Курск (4712)77-13-04
Липецк (4742)52-20-81

Киргизия (996)312-96-26-47

Магнитогорск (3519)55-03-13
Москва (495)268-04-70
Мурманск (8152)59-64-93
Набережные Челны (8552)20-53-41
Нижний Новгород (831)429-08-12
Новокузнецк (3843)20-46-81
Новосибирск (383)227-86-73
Омск (3812)21-46-40
Орел (4862)44-53-42
Оренбург (3532)37-68-04
Пенза (8412)22-31-16

Россия (495)268-04-70

Пермь (342)205-81-47
Ростов-на-Дону (863)308-18-15
Рязань (4912)46-61-64
Самара (846)206-03-16
Санкт-Петербург (812)309-46-40
Саратов (845)249-38-78
Севастополь (8692)22-31-93
Симферополь (3652)67-13-56
Смоленск (4812)29-41-54
Сочи (862)225-72-31
Ставрополь (8652)20-65-13

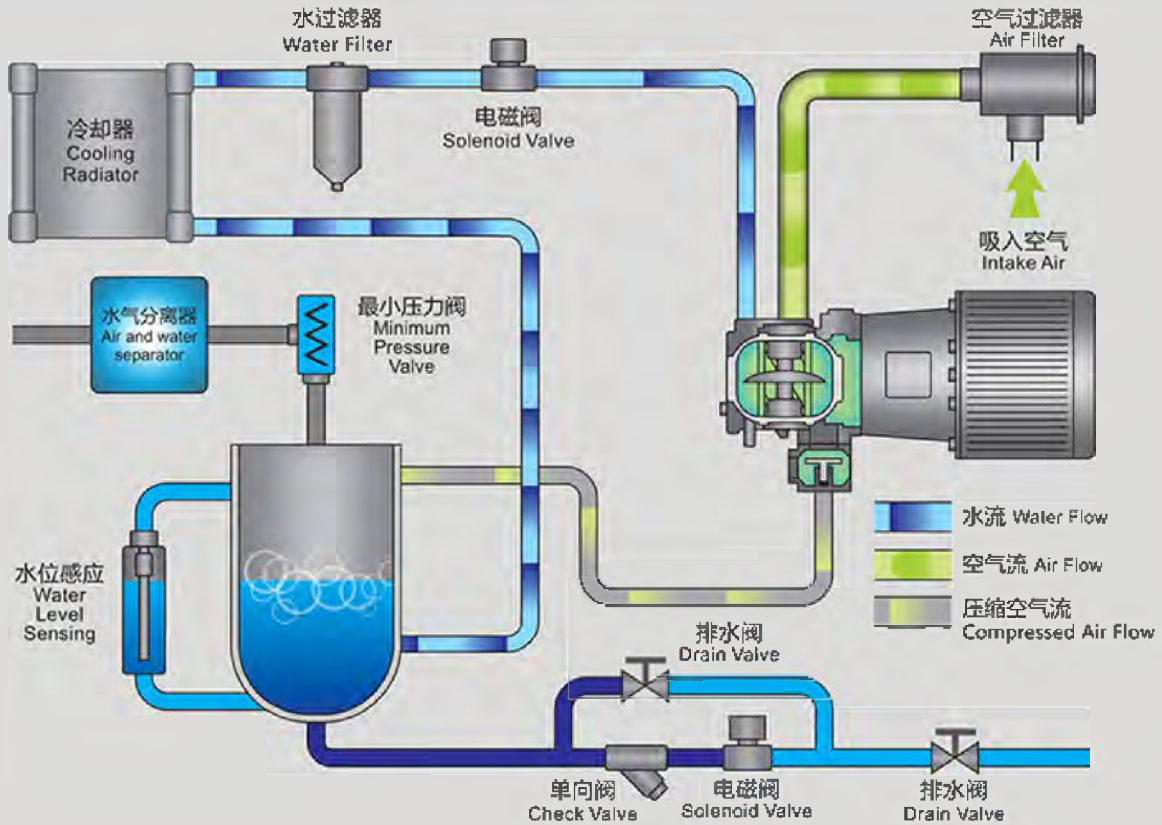
Казахстан (772)734-952-31

Сургут (3462)77-98-35
Тверь (4822)63-31-35
Томск (3822)98-41-53
Тула (4872)74-02-29
Тюмень (3452)66-21-18
Ульяновск (8422)24-23-59
Уфа (347)229-48-12
Хабаровск (4212)92-98-04
Челябинск (351)202-03-61
Череповец (8202)49-02-64
Ярославль (4852)69-52-93

<https://airking.nt-rt.ru> || ake@nt-rt.ru

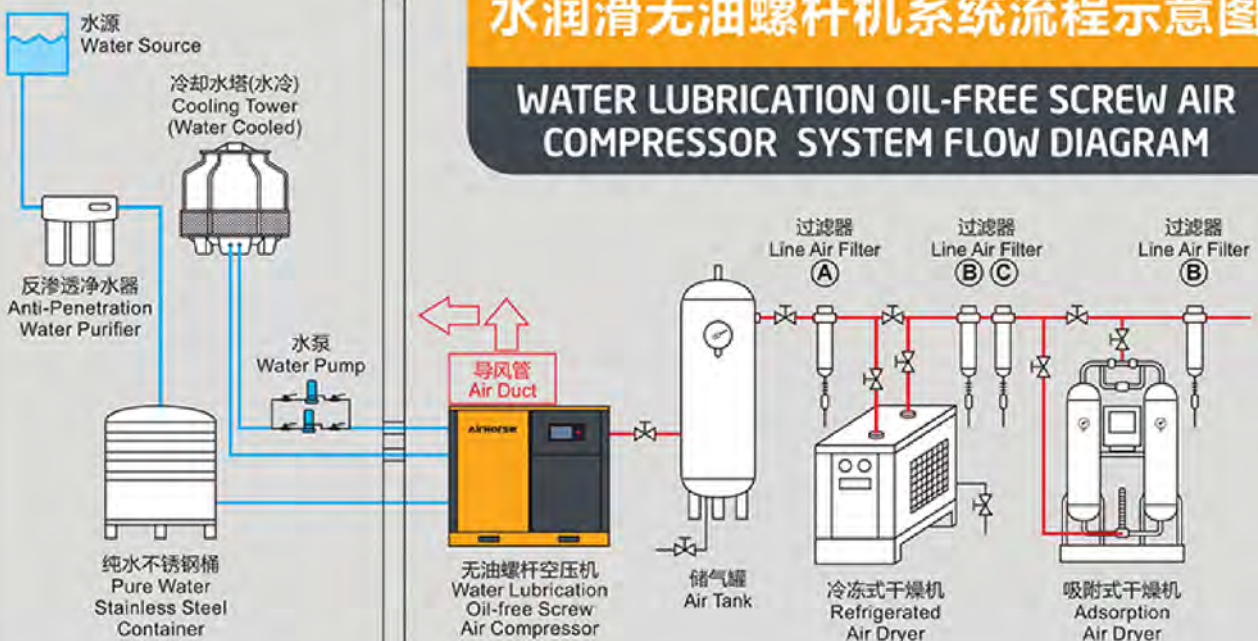
WATER LUBRICATION OIL-FREE SCREW AIR COMPRESSOR

SYSTEM FLOW DIAGRAM OF COMPRESSOR UNIT



水润滑无油螺杆机系统流程示意图

WATER LUBRICATION OIL-FREE SCREW AIR COMPRESSOR SYSTEM FLOW DIAGRAM



严谨的制造工艺

RIGOROUS MANUFACTURING PROCESS



1

严格的工艺生产 制造流程

STRICT
MANUFACTURING
PROCESS

每个零部件严格检测，精益求精，从原材料到零部件成品每一道程序严格把控，确保每个零部件达到优等品，各个零部件优化设计，保证更经久耐用。

Every component is strictly tested, strictly controlled on every procedure from raw material to assemble. Ensure each components is superior quality to ensure durability.



2

整机超静音设计

MACHINE IS
ULTRA-QUIET
DESIGN

整机机箱采用超静音设计，低转速大风量冷却风机，采用加大型冷却器减少空气对流摩擦，同时具有优秀的冷却效果。

The machine is ultra-quiet design, low-speed and large-volume cooling system, Large-scale cooler to reduce air convection friction to make excellent cooling effect.



3

人性化结构设计

HUMANIZED
STRUCTURE
DESIGN

人性化结构设计，简化安装，同时后续维护保养更加便利，极低的维护费用，无需专业人员，用户亦可经专业指导自行维护、保养，便于普及推广。

The humanized structure design simplified the installation, easy maintenance, low maintenance cost. User can do maintenance by themselves.



4

系统及压缩空气 超级洁净

COMPRESSED AIR
SUPER CLEAN

整机系统内部均采用不锈钢合金材料，保证耐用不腐蚀，具有超长的使用寿命，保证压缩空气“0”污染，更加节能、稳定、绿色环保。

The machine is made of stainless steel alloy material to ensure durability and non-corrosion. Its extremely long service life, guarantees no pollution of compressed air, and is more energy-saving, stable and environment friendly.



采用第五代无油螺杆主机技术，压缩机主机及系统采用不锈钢合金，实现了从铜主机到不锈钢主机的技术超越。

1 With the fifth generation technology of oil-free screw air end, the air end is stainless steel alloy, thus the technological transcendence from the copper air end to the stainless air end.

整机采用集成设计，没有繁杂的管路和线路，故障点更少，更稳定。

2 Integrated design, no complex pipe and electric line. Fewer failure, more stable.

更少的维护耗材(空气过滤滤芯、水过滤滤芯)，维护简便，保证更少的维护费用。

3 Less maintenance consumables (Air filter, water filter), Easy maintenance, less maintenance costs.

压缩机系统绝对无油，没有任何油污风险，是压缩空气无油的保证。

4 Absolutely oil free, No risk of oil pollution, Is the guarantee of oilless compressed air.

等温压缩，容积效率更高。相比二级干式无油螺杆机平均节能15%以上，相比其一级压缩平均节能25%以上，运行温度小于50℃，没有被灼伤的风险。

5 Ambient temperature compression, Higher efficiency, the average energy saving is more than 15% compared with two stage dry oil-free screw machine, 25% saving compared to single stage dry oil-free. The Operation temperature less than 50℃, No risk to burned.

全数控智能精密的加工技术以及主机运行受力平衡，保证更低的噪音、更小的震动，同时保障更长的使用寿命。

6 CNC intelligent precision machining technology and High balance of air ends operation, Guarantee lower noise, smaller vibration, Longer life.

7 更宽的压力范围：2bar-40bar
Pressure including: 2bar-40bar

8 相同功率的水润滑螺杆压缩机比干式无油螺杆压缩机排气量平均大10%以上。
10% air flow higher than dry oil free screw air compressor in same power.

操作更加简单方便，采用PLC智能控制，具有自动故障检测、故障预警、保养提醒、自动保护功能，可实现24小时无人值守，可实现远程控制功能。

9 Easy operation, PLC controlled, Automatic fault detection, Fault warning, Maintenance reminder, Automatic protection, 24 hours unattended, Remote control achieved.

压缩空气经过润滑水的清洗，更加洁净，可以直接用于呼吸使用，饱和压缩空气的露点更低，压缩空气的含水量比普通干式螺杆空压机平均低25%以上。

10 Compressed air is cleaned by lubricating water, More clean, Can be used directly for breathing, the dew point more lower, The water content of compressed air is 25% lower than dry screw air compressors.

专利主机优化设计，大转子，低转速(3000r/min以内)，没有齿轮箱，采用直连驱动，相比干式无油螺杆(10000r/min-20000r/min)更低转速，更长寿命。

11 Air end optimization design, big rotor, low RPM(3000r/min), no gear, direct driven. The RPM is more lower, and life is more longer than dry oilless screw.

可实现定期自动换水和自动系统清洗功能，压缩机内部更加整洁、卫生。

12 Regular automatic water change and automatic system cleaning, The compressor is cleaner and hygienic.

WATER LUBRICATION OIL-FREE SCREW AIR COMPRESSOR TECHNICAL PARAMETERS TABLE

100%无油螺杆空压机 Oil-Free Screw Air Compressor										
型号 Model	排气压力 Discharge Pressure (MPa)	流量 Air Flow (m ³ /min)	电机功率 Motor Power (KW/HP)	噪音 Noise (dB)	冷却水 进出口 Cooling Water Inlet and Outlet	冷却水量 Qty of Cooling Water (T/H)	润滑水量 Qty of Lubricating Water (L)	空气 出口 Air Outlet	重量 Weight (KG)	外形尺寸 Dimension (L×W×H) (mm)
AHW-7A/W	0.8	0.78	5.5/7.5	57	3/4"	1.5	10	3/4"	430	800x800x1100
	1.0	0.65								
AHW-10A/W	0.8	1.17	7.5/10	57	3/4"	2	10	3/4"	470	800x800x1100
	1.0	1.05								
	1.25	0.81								
AHW-15A/W	0.8	1.72	11/15	60	1"	2.5	26	3/4"	580	1200x800x1300
	1.0	1.42								
	1.25	1.10								
AHW-20A/W	0.8	2.43	15/20	60	1"	3.5	26	1"	620	1200x800x1300
	1.0	2.17								
	1.25	1.80								
AHW-25A/W	0.8	3.13	18.5/25	63	1"	4	30	1"	680	1400x1000x1520
	1.0	2.82								
	1.25	2.05								
AHW-30A/W	0.8	3.70	22/30	63	1"	5	30	1"	730	1400x1000x1520
	1.0	3.21								
	1.25	2.78								
AHW-40A/W	0.8	5.20	30/40	66	1½"	7	40	1½"	1100	1500x1150x1500
	1.0	4.43								
	1.25	3.63								
AHW-50A/W	0.8	6.50	37/50	66	1½"	9	40	1½"	1150	1500x1150x1500
	1.0	5.33								
	1.25	4.77								
AHW-60A/W	0.8	8.30	45/60	68	1½"	10	90	2"	1390	1800x1300x1750
	1.0	6.30								
	1.25	5.56								
AHW-75A/W	0.8	10.30	55/75	69	1½"	12	100	2"	1470	1800x1300x1750
	1.0	8.55								
	1.25	7.67								
AHW-100A/W	0.8	13.00	75/100	72	1½"	18	100	2"	1650	1800x1300x1750
	1.0	11.50								
	1.25	9.70								
AHW-120A/W	0.8	16.60	90/120	73	1½"	20	120	2½"	2350	2200x1550x1800
	1.0	14.66								
	1.25	12.60								
AHW-150A/W	0.8	20.20	110/150	77	2"	24	120	2½"	2480	2200x1550x1800
	1.0	16.66								
	1.25	15.56								
AHW-175A/W	0.8	22.52	132/175	77	2"	30	120	2½"	2600	2200x1550x1800
	1.0	19.97								
	1.25	16.90								
AHW-220A/W	0.8	28.11	160/220	79	3"	35	160	3"	3750	3000x1800x2100
	1.0	25.45								
	1.25	22.52								
AHW-250A/W	0.8	33.97	185/250	79	3"	38	160	3"	3900	3000x1800x2100
	1.0	29.00								
	1.25	25.21								
AHW-300A/W	0.8	39.67	220/300	80	4"	47	200	4"	4250	3100x1850x2100
	1.0	36.75								
	1.25	29.63								
AHW-350A/W	0.8	45.00	250/350	80	4"	53	200	4"	4650	3100x1850x2100
	1.0	39.67								
	1.25	33.97								

Архангельск (8182)63-90-72
 Астана (7172)727-132
 Астрахань (8512)99-46-04
 Барнаул (3852)73-04-60
 Белгород (4722)40-23-64
 Брянск (4832)59-03-52
 Владивосток (423)249-28-31
 Волгоград (844)278-03-48
 Вологда (8172)26-41-59
 Воронеж (473)204-51-73
 Екатеринбург (343)384-55-89
 Иваново (4932)77-34-06

Ижевск (3412)26-03-58
 Иркутск (395)279-98-46
 Казань (843)206-01-48
 Калининград (4012)72-03-81
 Калуга (4842)92-23-67
 Кемерово (3842)65-04-62
 Киров (8332)68-02-04
 Краснодар (861)203-40-90
 Красноярск (391)204-63-61
 Курск (4712)77-13-04
 Липецк (4742)52-20-81

Магнитогорск (3519)55-03-13
 Москва (495)268-04-70
 Мурманск (8152)59-64-93
 Набережные Челны (8552)20-53-41
 Нижний Новгород (831)429-08-12
 Новокузнецк (3843)20-46-81
 Новосибирск (383)227-86-73
 Омск (3812)21-46-40
 Орел (4862)44-53-42
 Оренбург (3532)37-68-04
 Пенза (8412)22-31-16

Пермь (342)205-81-47
 Ростов-на-Дону (863)308-18-15
 Рязань (4912)46-61-64
 Саратов (845)249-38-78
 Самара (846)206-03-16
 Санкт-Петербург (812)309-46-40
 Севастополь (8692)22-31-93
 Симферополь (3652)67-13-56
 Смоленск (4812)29-41-54
 Сочи (862)225-72-31
 Ставрополь (8652)20-65-13

Сургут (3462)77-98-35
 Тверь (4822)63-31-35
 Томск (3822)98-41-53
 Тула (4872)74-02-29
 Тюмень (3452)66-21-18
 Ульяновск (8422)24-23-59
 Уфа (347)229-48-12
 Хабаровск (4212)92-98-04
 Челябинск (351)202-03-61
 Череповец (8202)49-02-64
 Ярославль (4852)69-52-93

Киргизия (996)312-96-26-47

Россия (495)268-04-70

Казахстан (772)734-952-31